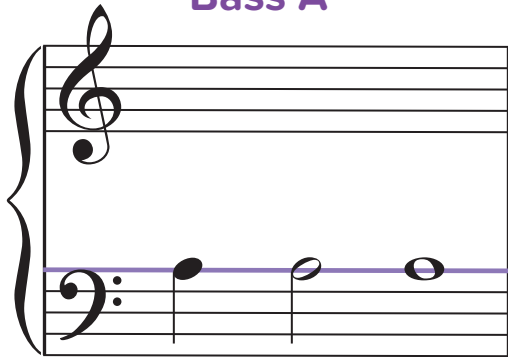


## Bass A



**Bass A** is on the top line of the bass clef staff.

Do you see the notes on the purple line?

They all are **Bass A**!



# Halloween Monster

1

*p* Boo - gie boo - gie boo - gie boo, I'm a mon - ster green and blue!

2

Detailed description: This system contains the first four measures of the song. The top staff is in treble clef with a 4/4 time signature. The bottom staff is in bass clef with a 4/4 time signature. The melody in the top staff consists of quarter notes: G4, A4, B4, C5, D5, E5, D5, C5, B4, A4, G4. The lyrics are: "Boo - gie boo - gie boo - gie boo, I'm a mon - ster green and blue!". The bass line consists of quarter notes: G2, F2, E2, D2, C2, B1, A1, G1, F1, E1, D1, C1. The first measure is marked with a '1' above the staff and a 'p' (piano) dynamic marking below the first note.

5

*f* Boo - gie boo - gie boo - gie boo, scar - ing you is what I do!

Detailed description: This system contains the next four measures of the song. The top staff is in treble clef with a 4/4 time signature. The bottom staff is in bass clef with a 4/4 time signature. The melody in the top staff consists of quarter notes: G4, A4, B4, C5, D5, E5, D5, C5, B4, A4, G4. The lyrics are: "Boo - gie boo - gie boo - gie boo, scar - ing you is what I do!". The bass line consists of quarter notes: G2, F2, E2, D2, C2, B1, A1, G1, F1, E1, D1, C1. The fifth measure is marked with a '5' above the staff and an 'f' (forte) dynamic marking below the first note.

Teacher Duet: Student plays 1 octave higher

L.H. 5 *p* *f*

Detailed description: This section shows a single bass clef staff. It starts with a piano (*p*) dynamic and a '5' above the first note. The melody consists of quarter notes: G2, F2, E2, D2, C2, B1, A1, G1, F1, E1, D1, C1. The dynamic changes to forte (*f*) at the end of the staff.