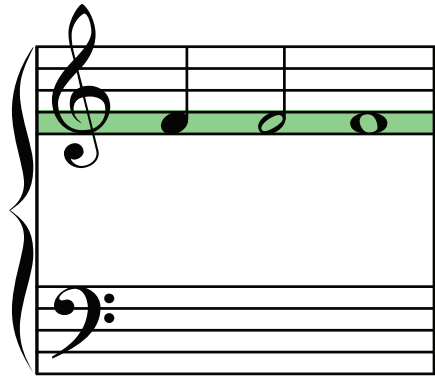
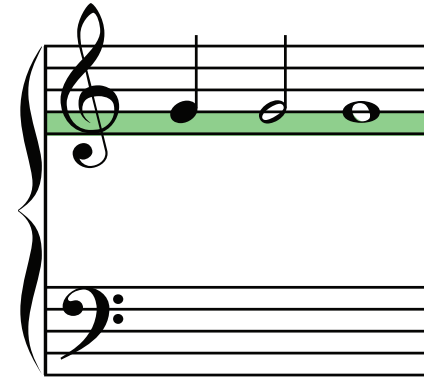


The Rainbow Method Explained

When you read space notes, remember that the entire note head needs to be on the space.

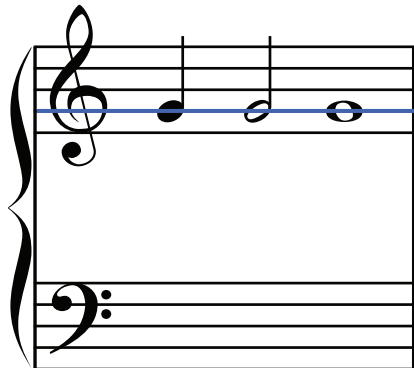


The note head is completely on the green space.

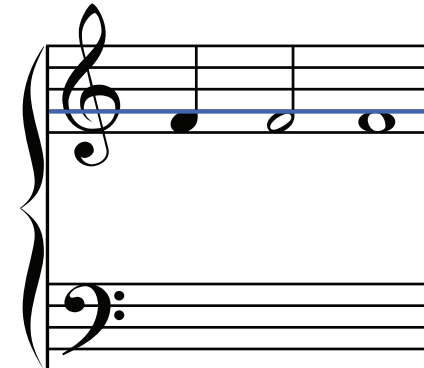


The note head is only partially on the green space. This note has a line going through its center, so it is not on the green space. It is on the line above the green space.

When you read line notes, remember that the line passes through the center of the note head.



The blue line passes through the center of the note head, so this note is on the blue line.



The blue line does not pass through the center of the note head, so this note is not on the blue line. This note is on the space below the blue line.